

## Summary

- 15.7 MW solar development at Locquiers Farm, next to Plump Hill, Mitcheldean, capable of supplying power to 4,300 homes.
- Carbon dioxide savings of up to 840,000 tonnes over 30 years.
- Moderate quality (grade 3a and 3b) agricultural land, currently used as pasture, would be converted to dual use – for the generation of a significant supply of green energy and for sheep grazing.
- During operation, there would be no light pollution, negligible noise and minimal traffic.

## Contact us

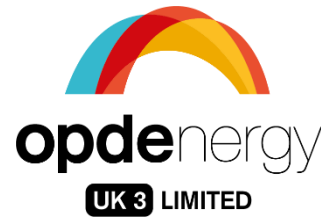
We would very much like to hear your views; please send your comments on:  
[www.locquierssolarfarm.co.uk](http://www.locquierssolarfarm.co.uk)

Alternatively, please send an email to [locquierssolarfarm@opdenenergy.com](mailto:locquierssolarfarm@opdenenergy.com)

## Planning Application

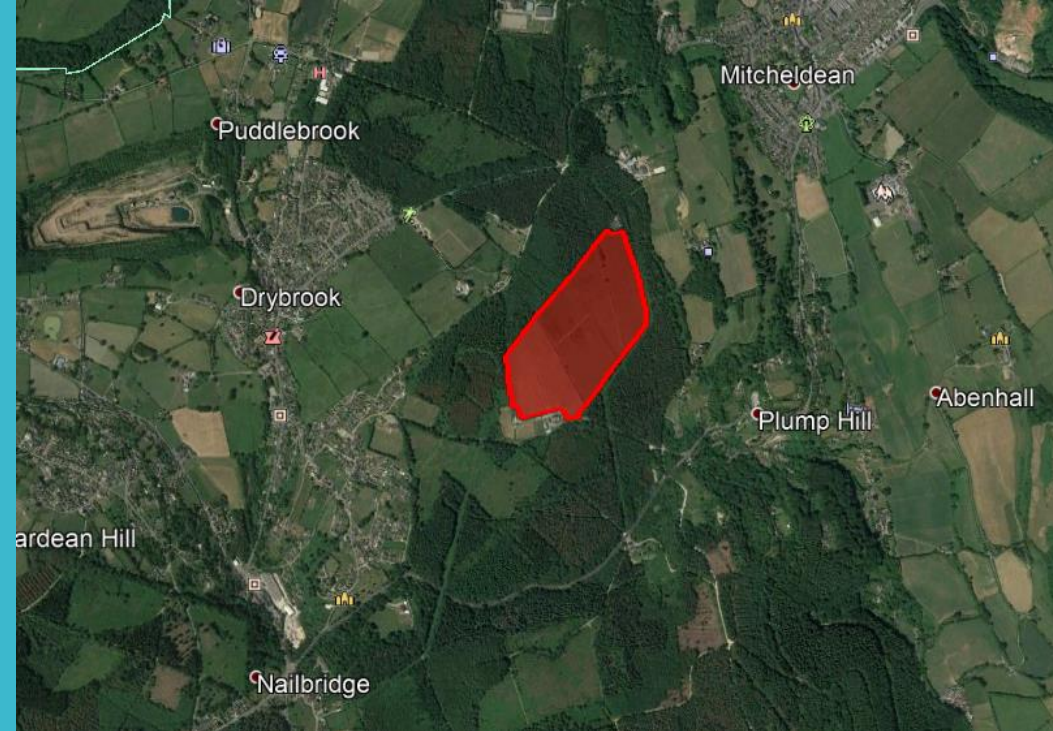
Solar power helps the UK to achieve its zero-carbon objectives – we hope you will support the planning application.

Following the conclusion of this public consultation, we hope to submit a Planning Application to Forest of Dean Council during April 2021.



## Community Information

### Proposed Solar Development Locquiers Solar Farm



Locquiers Solar Farm, Plump Hill, Mitcheldean, GL17 0HQ



[www.locquierssolarfarm.co.uk](http://www.locquierssolarfarm.co.uk)



[locquierssolarfarm@opdenenergy.com](mailto:locquierssolarfarm@opdenenergy.com)

energizing **the future**



# Introduction



## Company Overview

We are an international group specializing in energy assets production, managing all its phases - development, financing, construction, operation and maintenance. As part of the solution to climate change, we have been involved in developing solar PV projects in the UK since 2012.

## Our Proposal

A solar farm west to Plump Hill, Mitcheldean, with a capacity of **15.7MW**, sufficient to power 3,200 homes.



## Site Selection & Local Communities

Through our initial assessments we have selected the site area shown opposite. We are currently undertaking various environmental assessments – these include landscape & visual impact, a full ecological study and heritage/archaeology.

We wish to engage with the local community. Unfortunately, due to Covid-19, it is not possible to hold a public consultation meeting. We wish to inform our plans and gather feedback, so for additional information, please visit:

[www.locquiersolarfarm.co.uk](http://www.locquiersolarfarm.co.uk)

# The Solar Farm

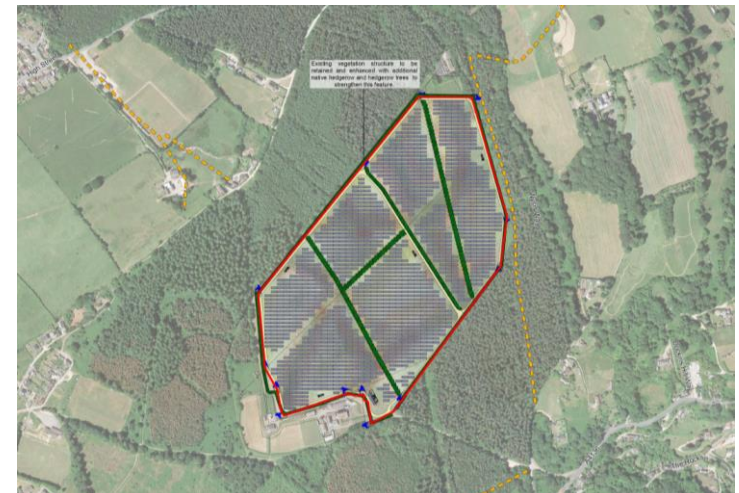


Existing trees, hedgerows and shrubs would remain and be maintained. Very low visual impact, although hedgerow screening would be added if necessary. There would be gaps in fencing for mammals. Wild grasses and seed-rich flowers would be encouraged as a haven for wildlife, and the land would be available for grazing.

No permanent lighting. Noise would be negligible – although inverters produce a hum at peak times from their cooling fans, this is usually less than two decibels above ambient noise levels at the site boundary. Security would be monitored remotely via infrared CCTV.

Subject to Consent, the intention is to start construction on site Spring 2022, with completion and connection to the grid by beginning 2023.

After 30 years, cabling and frames would be removed, and the land would be returned to its original state, as guaranteed via Planning Consent (since the land had been fallow, its fertility would have been improved).



**Solar Farm Layout (Preliminary)**